



An aerial photograph of the Paradip Port Trust facility, showing a large industrial complex with numerous buildings, roads, and a central canal or waterway. The facility is situated on a peninsula or near a large body of water. The image is used as a background for the contact information text.

Contact Information

CHAIRMAN

Paradip Port Trust
Paradip Port: 754142, Odisha, India
Phone: 06722-222046/222127
Telefax: 06722-222256
E-mail: chmppt@paradiport.gov.in

TRAFFIC MANAGER

Paradip Port Trust
Paradip Port: 754142, Odisha, India
Phone: 06722-222151
Telefax: 06722-222112
E-mail: tmppt@paradiport.gov.in

DEPUTY CHAIRMAN

Paradip Port Trust
Paradip Port: 754142, Odisha, India
Phone: 06722-222017
Telefax: 06722-222247
E-mail: dychmppt@paradiport.gov.in

PUBLIC RELATION OFFICER

Paradip Port Trust
Paradip Port: 754142, Odisha, India
Phone: 06722-222242
Telefax: 06722-222242
E-mail: proppt@paradiport.gov.in



Port Information

Port : PARADEEP
UN Locator code : INPPT
Location : Lat: 20°15'-55.44" N / Long: 86°40'-34.62" E

Pilot Boarding Ground : Berthing inside Harbour (port)
1. Within 2 nautical miles from break water
2. Port control may change position depending on draft.

Berthing for SPM
1. Within 2 nautical mile from SPM

Cargo handled And Berth Information

Berth No.

FB-I (FERTILIZER BERTH-I)

LOA

230 Meters

Beam

33 Meters

Deadweight

NA

Draft (FW / BW / SW)

12.5 Meters

Displacement

NA

Loading / discharging Arm /Size of connection/arm

Phos Acid: 8 inches / 150 lb. X 02 Nos. Hose,

Sul Acid: 8 inches / 150 lb. X 01 No Hose,

Ammonia: 8 inches / 300 lb. X 01 No Arm

Any special approval reqd from terminal

NIL

Night Restriction

NO

Priority

NIL

Max/Min PBL

NA

Mooring Pattern

As per IOM Regulations

Any Other Restriction

To accommodate liquid cargo tankers concerned receivers use to shift working bulk cargo discharging vessels to anchorage on their account.

Remarks

PPL (PARADIP PHOSPHATES LIMITED)-
CAPTIVE BERTH



Berth No.

LOA

Beam

Deadweight

Draft (FW / BW / SW)

Displacement

Loading / discharging Arm /Size of connection/arm

Any special approval reqd. from terminal

Night Restriction

Priority

Max/Min PBL

Mooring Pattern

Any Other Restriction

Remarks

FB-II (FERTILIZER BERTH-II)

230 Meters

33 Meters

NA

12.5 Meters

NA

Phos Acid: 8 inches / 150 lb. X 02 Nos. Hose,

Sul Acid: 8 inches / 150 lb. X 02 Nos. Hose,

Ammonia: 12 inches / 300 lb. X 01 No Arm

NIL

NO

NIL

NA

As per IOM Regulations

To accommodate liquid cargo tankers concerned receivers use to shift working bulk cargo discharging vessels to anchorage on their account.

IFFCO (INDIAN FARMERS FERTILIZERS CO-OPERATIVE LIMITED) - CAPTIVE BERTH



Berth No.

LOA

Beam

Deadweight

Draft (FW / BW / SW)

Displacement

Loading / discharging Arm /Size of connection/arm

Any special approval reqd from terminal

Night Restriction

Priority

Max/Min PBL

Any Other Restriction

Remarks

NOJ (NORTH OIL JETTY)

230 Meters

33 Meters

NA

13.5 Meters

NA

HSD: 8 inches X 02 Nos. Hose,

SKO: 8 inches X 01 No Hose,

MS: 8 inches X 02 No Hose

NIL

NO

NIL

NA

An aerial photograph of a port facility. A large ship is docked at a pier in the center. The surrounding area includes industrial buildings, roads, and a body of water. The text is overlaid on the image.

Berth No.

LOA

Beam

Deadweight

Draft (FW / BW / SW)

Displacement

Loading / discharging Arm /Size of connection/arm

Any special approval reqd. from terminal

Night Restriction

Priority

Max/Min PBL

Remarks

SPM-I

370 Meters

60 Meters

Maximum 3,20,000 Mt And Minimum 80,000 Mt.

21 Meters

NA

CRUDE OIL: 16 inches X 02 Nos Hoses

NIL

BERTHING (DAYLIGHT) & SOME TIME

SAILING (AT NIGHT)

NIL

NA

IOCL (PIPELINE DIVISION)

An aerial photograph of a port facility. A large ship is docked at a pier in the center. The pier extends from a landmass on the left towards the right. The water is dark blue, and the land is a mix of green and brown. There are various structures and roads visible on the land.

Berth No.

LOA

Beam

Deadweight

Draft (FW / BW / SW)

Displacement

Loading / discharging Arm /Size of connection/arm

Any special approval reqd. from terminal

Night Restriction

Priority

Max/Min PBL

Mooring Pattern

Any Other Restriction

Remarks

SPM-II

370 Meters

65 Meters

Maximum 3,20,000 Mt And Minimum 80,000 Mt.

23 MTRS

NA

CRUDE OIL: 16 inches X 02 Nos. Hoses

NIL

BERTHING (DAYLIGHT) & SOME TIME

SAILING (AT NIGHT)

NIL

NA

PLS SEE NOTE BELOW

IOCL (PIPELINE DIVISION)



Berth No.

LOA

Beam

Deadweight

Draft (FW / BW / SW)

Displacement

Loading / discharging Arm /Size of connection/arm

Any special approval reqd from terminal

Night Restriction

Priority

Max/MinPBL

Mooring Pattern

Any Other Restriction

Remarks

Misc.

SPM-III

370 Meters

65 Meters

Maximum 3,20,000 Mt And Minimum 80,000 Mt.

23 Meters

NA

CRUDE OIL: 16 inches X 02 Nos. Hoses

NIL

BERTHING (DAYLIGHT) & SOME TIME

SAILING (AT NIGHT)

NIL

NA

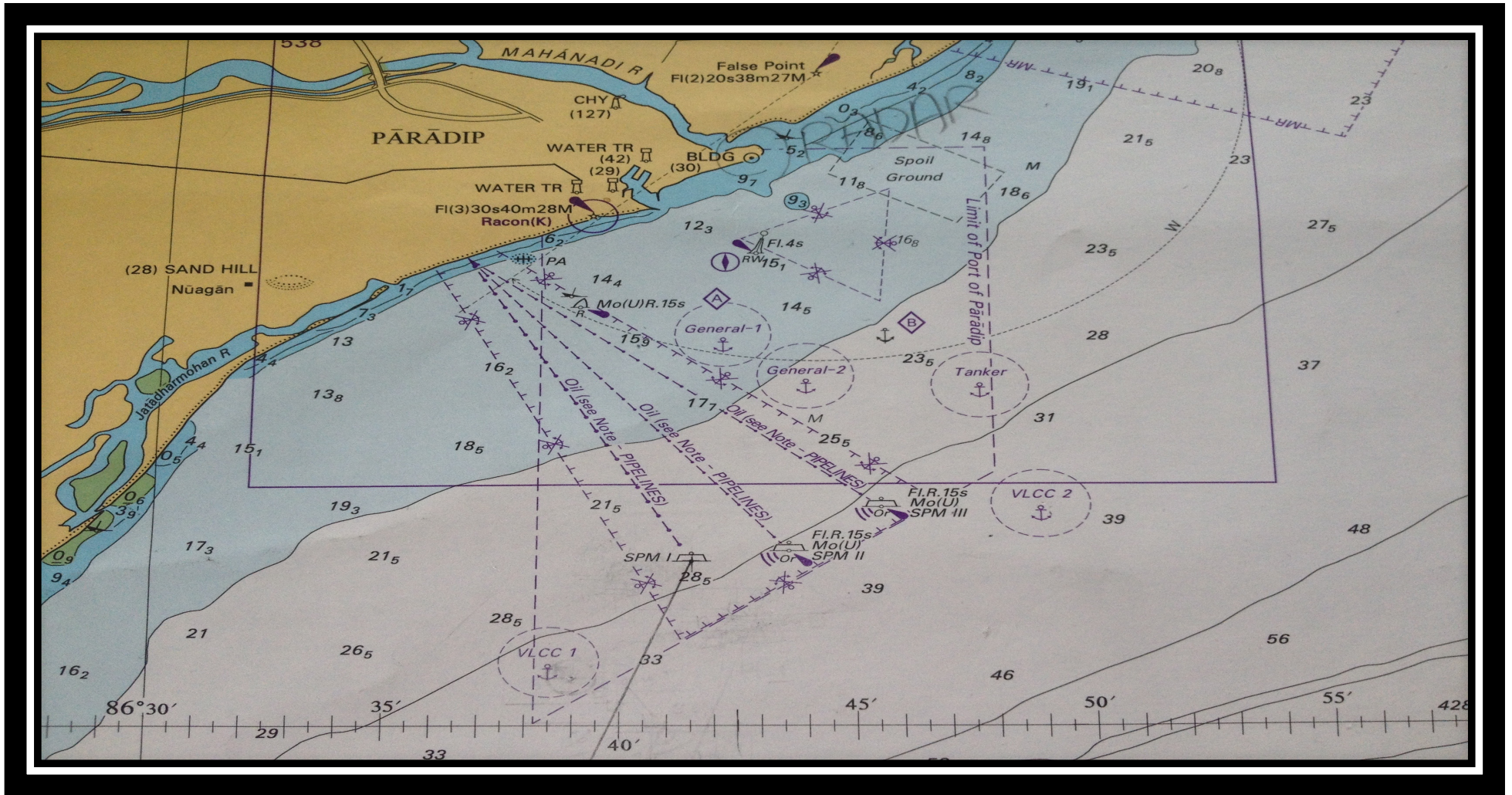
PLS SEE NOTE BELOW

IOCL (PIPELINE DIVISION)

NOTE (MOORING ROPE) - FOR SPM:

1. The vessel should have two new pairs of minimum 80 mm ropes. The ropes must be floating in nature and of sufficient strength for pull back operation. One pair of the rope will be used for pull back operation and another pair will be kept as standby for use in exigency.
2. The pair of ropes should be of standard length of 220 m and of same material.
3. Vessel should have a pair of good quality mandal shackle for pull back operation.
4. The vessel should be ready with two pairs of ropes and a pair of mandal shackle at the aft of the vessel before the Pilots boards the vessel so that there is no delay while making fast the aft tug.





General Layout of Paradip Port (BA538)
 For reference only: Not to be used for navigation